

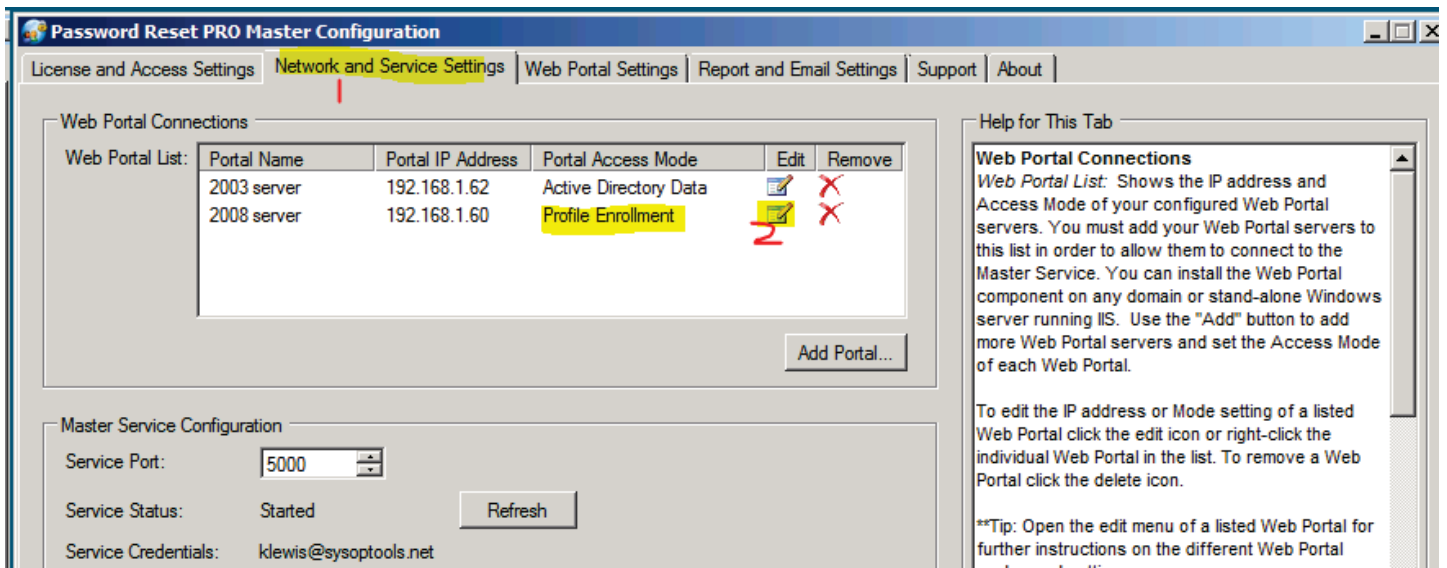
## Password Reset PRO: Making Custom Changes to the Profile Enrollment Mode

Software version 3.x.x

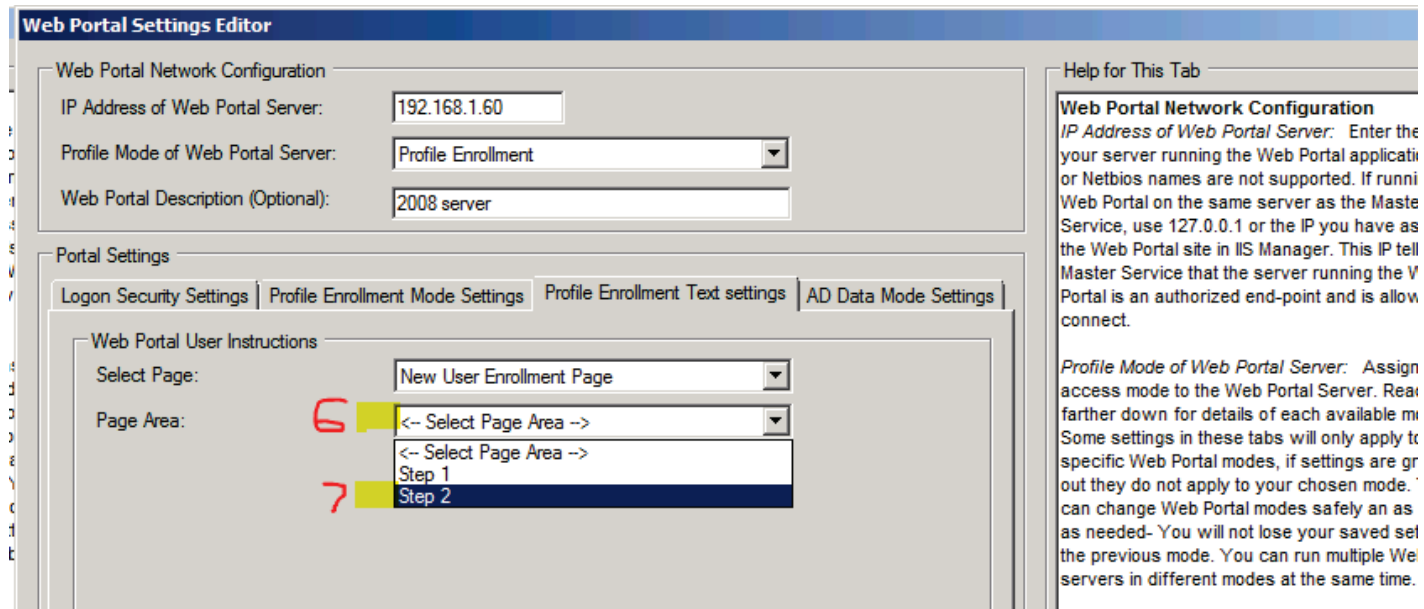
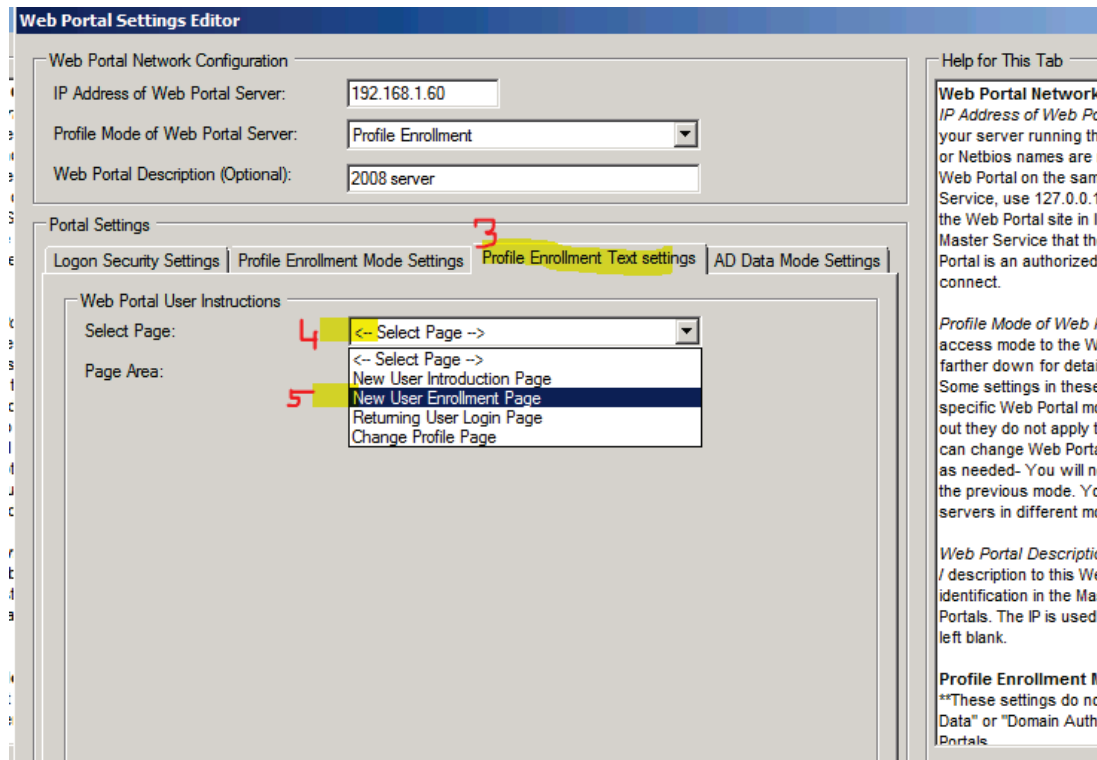
The below guide covers how to make changes to the Profile Enrollment Mode web portal text and security images. This will allow you to custom tailor the process for your unique user communities.

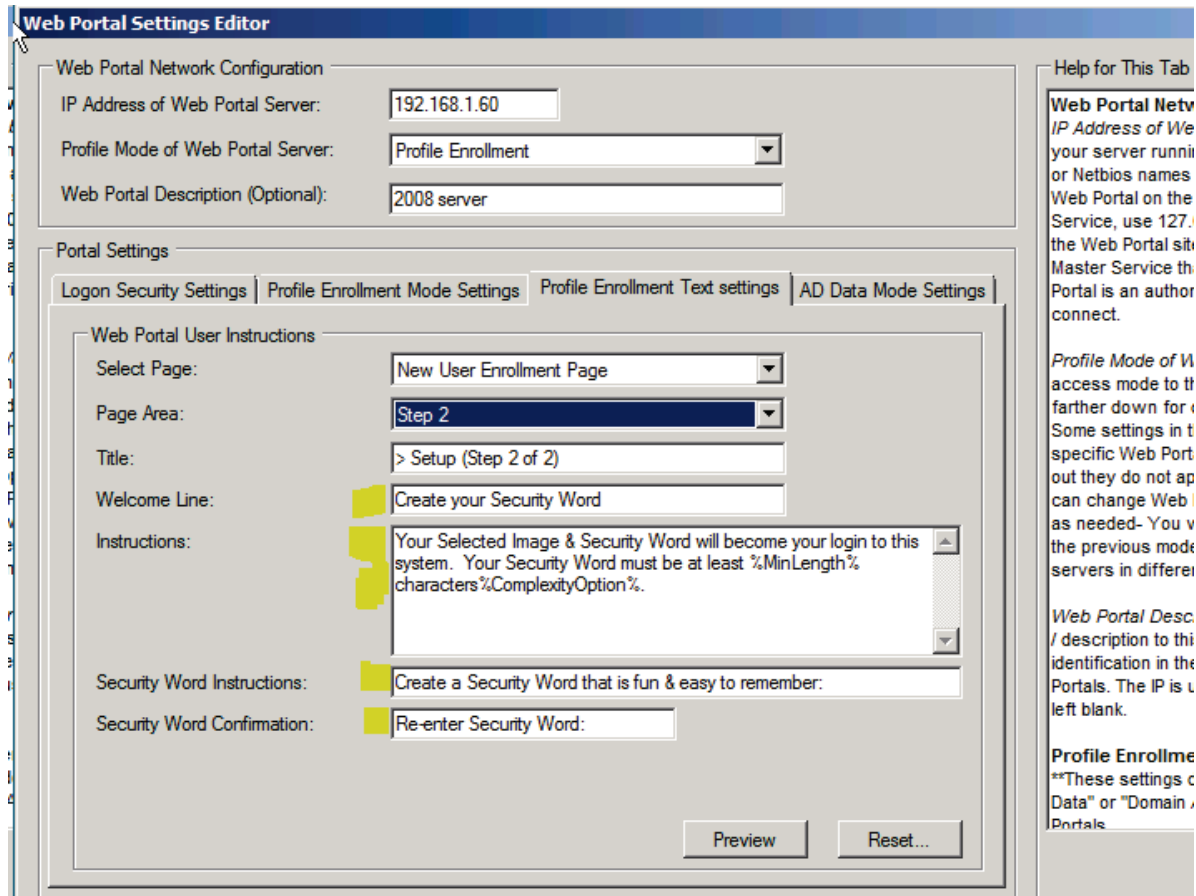
### Screenshots of getting to the text settings control for your Profile Enrollment Mode web portal:

1. Open the Master Service configuration application
2. Go to the Network and Service Settings tab
3. Click the 'Edit' icon for your listed Profile Enrollment portal to open the sub menu settings



The Web Portal Settings Editor menu opens. Click on the “Profile Enrollment Text Settings” tab. Use the drop down controls to select the specific page you would like to modify, then use the second drop down to select the specific portion of that page’s text. These controls govern the “New User Introduction” page, “New User Enrollment” pages, “Returning Enrolled User Logon” pages, and “Change Profile” page.

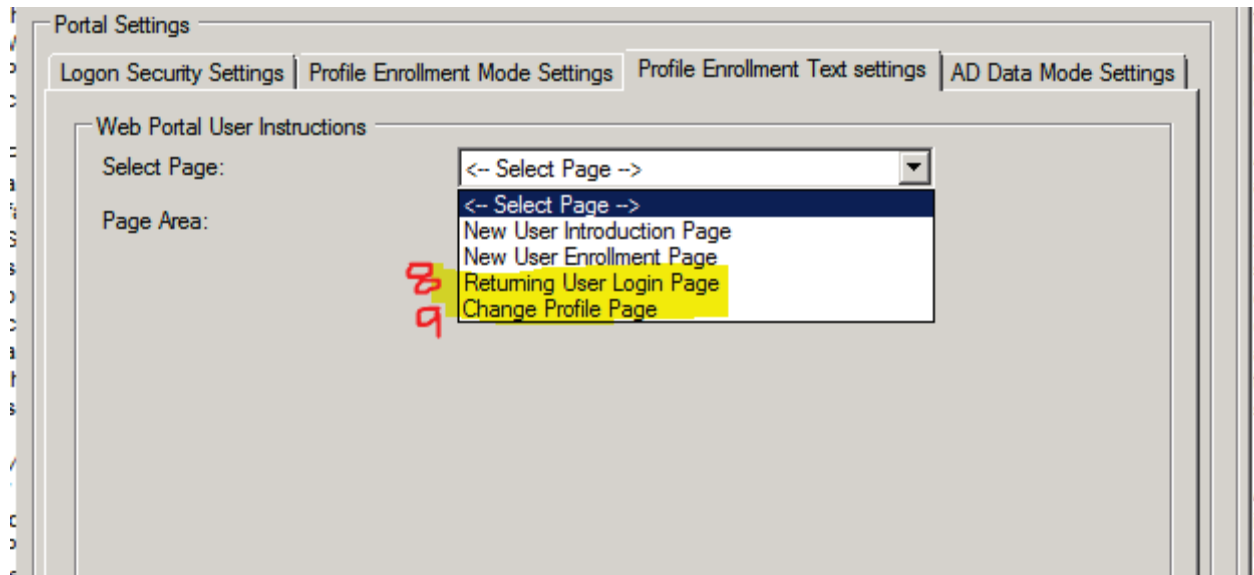




EXAMPLE: Let's say you would like to change the Step 2 New User Enrollment text to say "Create a Six Digit PIN" instead of the default "Create a Security Word". You could also consider other choices such as 'Enter your Employee ID', 'Enter your Student ID', 'Enter last four of your SSN', etc. The goal is to ask your users to create something that is very easy to remember but still uniquely secure.

As an added benefit, you can remove the %MinLength% and %ComplexityOption% variables if they do not fit your wording, as those variables are populated dynamically from the "Profile Enrollment Mode Settings" tab where you set the security word min length and the complexity options. If for example you want users to create a 4 or 6 digit PIN, adjust the min length setting accordingly, and to use "simple" for the complexity option.

NOTE: After you finish this screen, click "OK" and then click "Save Changes" in the Master Service to commit. You can then enroll a test user to see the wording changes to the Step 2 process. If you are happy with it, you **MUST** go back and change the other page areas so the "Step 2" wording matches on the return logon page and the change profile page. Example, if you edit the New User Enrollment wording, but do not update the Returning User Logon wording to match, the returning enrolled user will be very confused!



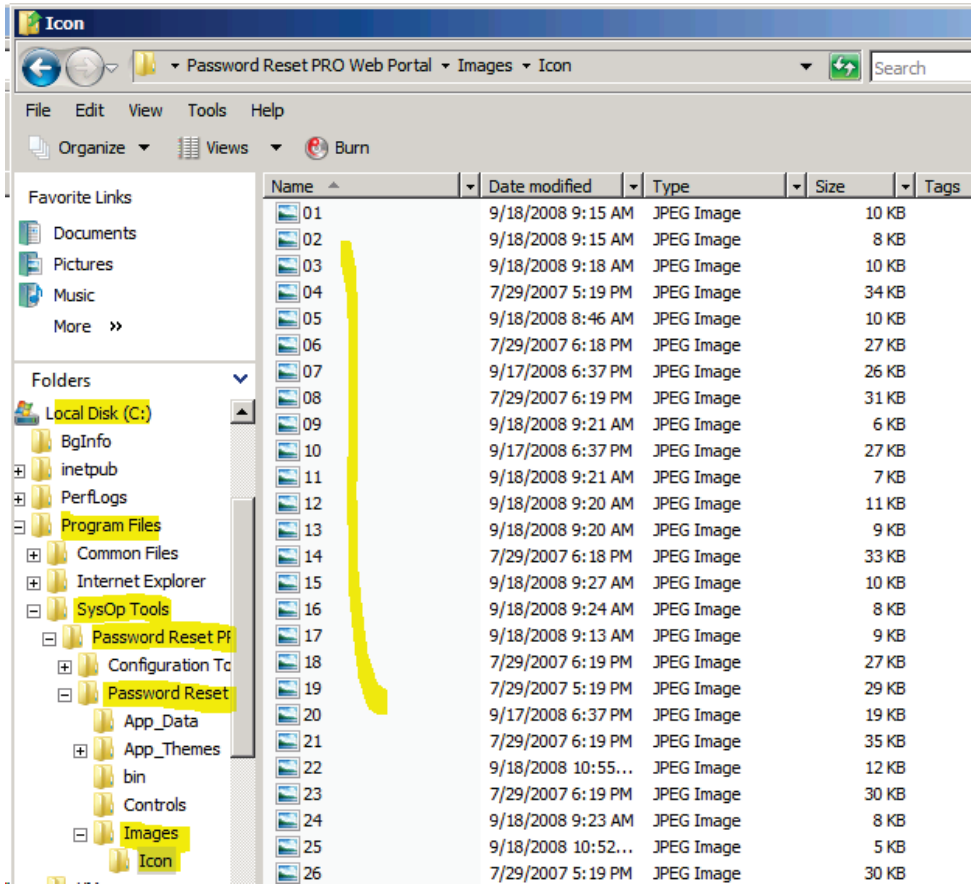
For the final test of wording changes, be sure to test all scenarios:

1. New user enrollment
2. Returning enrolled user logon
3. Logged on enrolled user clicks “Change Portal Login” from within their main web portal area.
4. Make sure all wording matches for these processes!

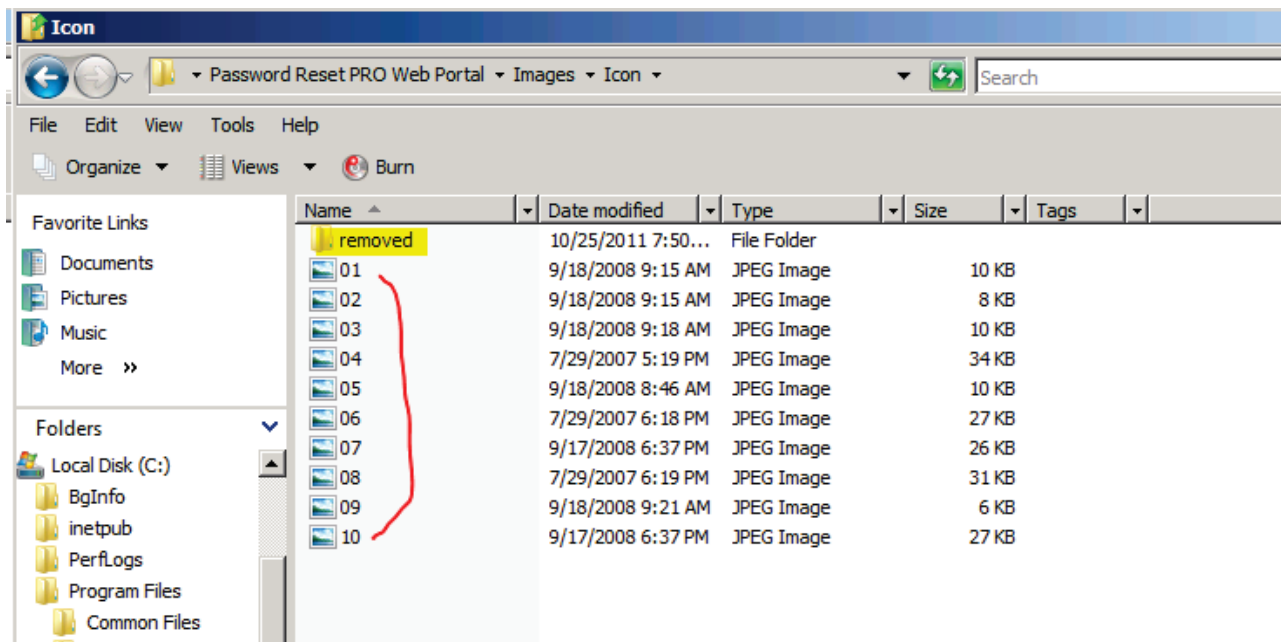
## Changing the Profile Enrollment security thumb images:

Enrollment images are located on the Web Portal server at “C:\Program Files\SysOp Tools>Password Reset PRO>Password Reset PRO Web Portal\Images\Icon”. There are 28 images total. To use less images on the Web Portal page, move some images out of the \Icon directory. Example, just leave 01.jpg through 05.jpg and remove 06.jpg through 28.jpg

If you will be using your own custom images, new images **must** use the exact same file names and format as the default images. Simply overwrite the existing default images. They *should* be the same exact pixel size, however, you can actually use any size of image. NOTE! Using other size images will require you to adjust the aspx HTML code, and the ascx control file for table layout- Otherwise the images may not lay out correctly.

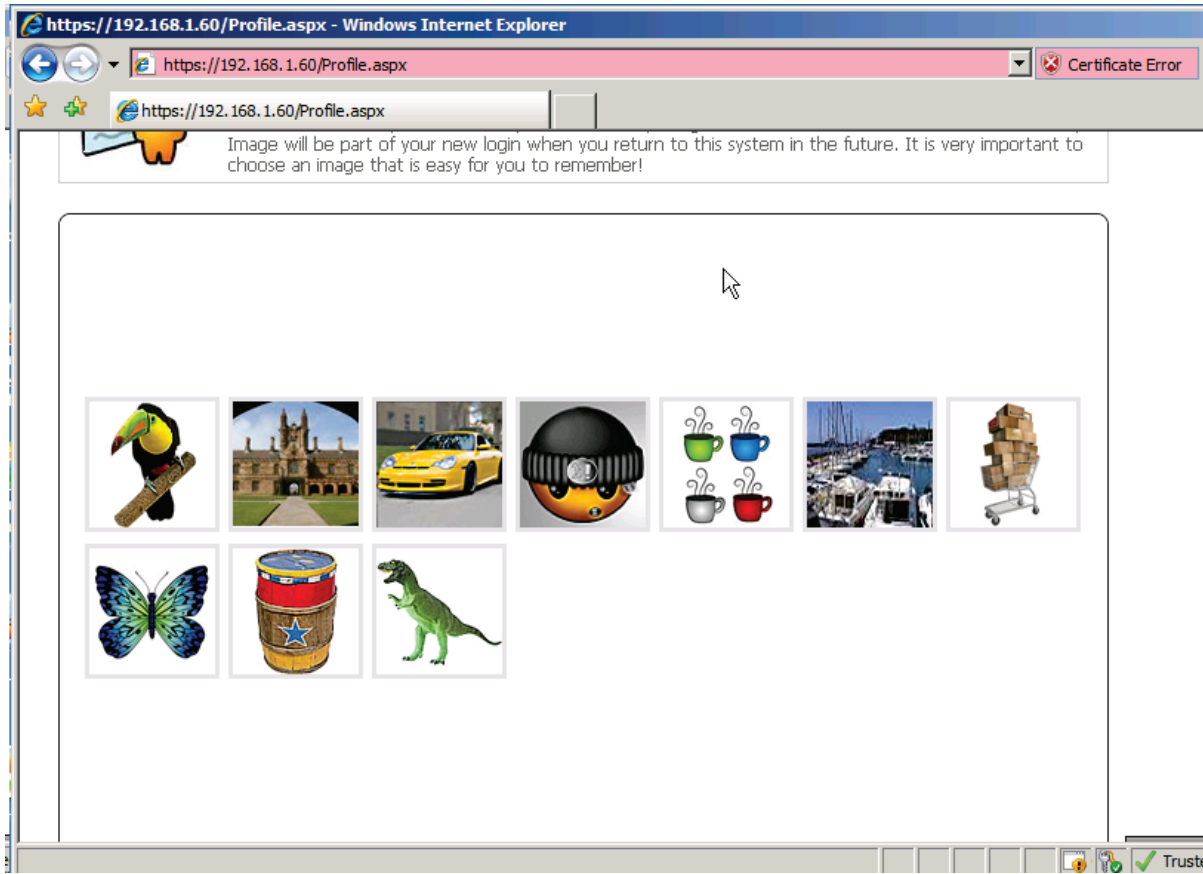


Create a new folder called "Removed" and move some of the images into it, so there are now less images in the \Icon directory. In the example below we only left 10 images in the directory.



This results in less images (10) shown on the web portal page, instead of all 28.

NOTE: After you make this change, be sure to recycle the Password Reset PRO application pool in IIS manager, and refresh your browsers' cache, otherwise you will not see the changes.



**See our Advanced guide for making further changes to web pages, images and CSS.**

**Have more questions? Contact our knowledgeable Sales & Support Teams**

**1-877-SYSOPTOOLS (USA) or +1-213-995-5060 (Direct & Int'l)  
Support Team Hours: M-F 8am-6pm PST | Sales Team Hours: M-F 9am-6pm PST**

**Additional Resources:**

-  [Purchase Information](#) |  [Reference Material and Knowledge Base](#)
-  [Support Information](#) |  [>> Sign up and Download Password Reset PRO Software](#)

*SysOp Tools, Inc. is a privately held company located in Los Angeles, California – Software sales, support and development are handled by experienced in-house staff. We do not outsource any of our operations.*